

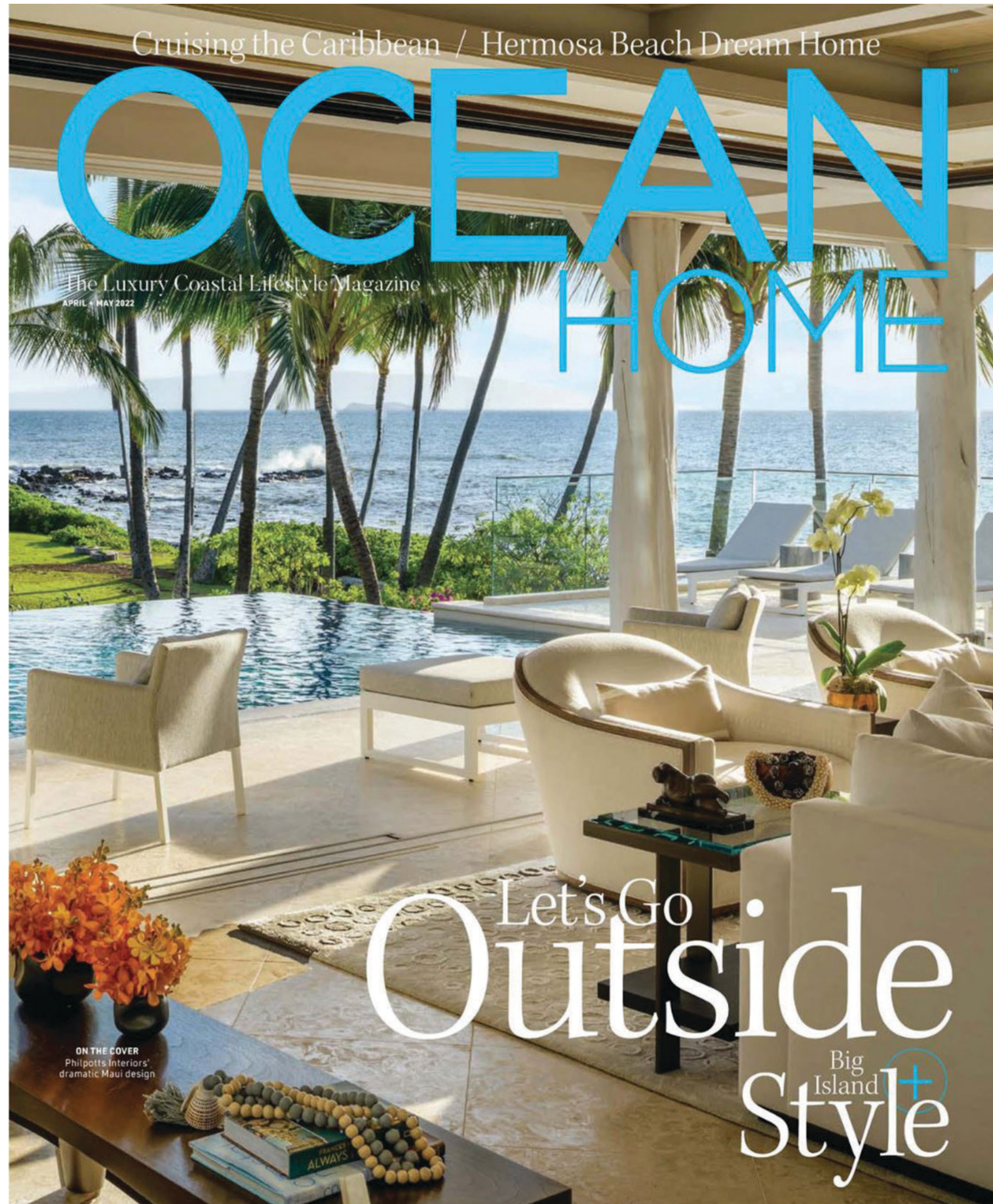
Cruising the Caribbean / Hermosa Beach Dream Home

# OCEAN HOME

The Luxury Coastal Lifestyle Magazine  
APRIL + MAY 2022

Let's Go  
Outside  
Big Island Style

ON THE COVER  
Philpotts Interiors  
dramatic Maui design





# contents

April + May 2022

DEPARTMENTS



12



34



64

## DESIGN

12

### INTERIOR DESIGN White Space

Workshop/APD goes minimalist in Asbury Park, directing all eyes to the view.

20

### GUEST DESIGNER Lounge Life

A prominent interior designer creates an outdoor oasis with hints of glamour and eye-catching artistic elements in Southern California.

22

### INTERIOR INSPIRATION Study In Texture

A seaside family home in Cape Cod, Massachusetts, gets a fresh living room design with the help of a New York designer.

24

### PRIME FINDS

#### Outside Perspective

Sculptural coffee tables and modern furnishings define any outdoor space.

## LIFESTYLE

26

### INTERIOR DESIGN Triple Play

A trio of natural and manmade landscape elements define a Hawaii home's design.

34

### INTERIOR DESIGN Setting the Scene

Formerly in the movie industry, Hillary Stamm takes her creativity to residential interior design.

40

### TRAVEL

#### Oceanfront Oasis

Once you step inside the St. Regis Bal Harbour Resort, unparalleled luxury, impeccable service, and divine cuisine, await—all with an ocean view.

## JOURNEYS

64

### DESTINATION: CARIBBEAN Amazing Journey

Virgin Voyages offers stellar luxury, service, cuisine and good times.

68

### OPENINGS + DEVELOPMENTS Coastal Luxury Living

The latest in oceanfront real estate and resorts.

24

PHOTOGRAPHS, CLOCKWISE FROM TOP: LEFT, BY NICOLA DOTAN, COURTESY OF THE MANUFACTURERS, COURTESY OF VIRGIN VOYAGES, AND BY KIM PRITCHARD

WADIA ASSOCIATES

RESIDENTIAL ARCHITECTURE OF DISTINCTION

EXQUISITE DETAILS & PERFECT PROPORTIONS.  
TRADITIONAL ARCHITECTURE FOR THE MODERN WORLD.



IN EVERY ISSUE Editor's Letter Page 8 / Contributors Page 10 / Last Look Page 88

OCEANHOMEMAG.COM

NEW CANAAN 203.966.0048

WADIAASSOCIATES.COM

PALM BEACH 561.282.9449



# design

THE BEST IN COASTAL INTERIOR DESIGN

■ INTERIOR DESIGN

## WHITE SPACE

WORKSHOP/APD GOES MINIMALIST IN ASBURY PARK, DIRECTING ALL EYES TO THE VIEW.

BY MARNI ELYSE KATZ  
PHOTOGRAPHS BY DONNA DOTAN

APR  
+  
MAY  
2022

12

APR  
+  
MAY  
2022

13

The clients wanted sophisticated statement pieces that were durable and comfortable, and didn't distract from the ocean view, not to mention the beach and boardwalk.



# design

INTERIOR DESIGN

APR  
+  
MAY  
2022

14



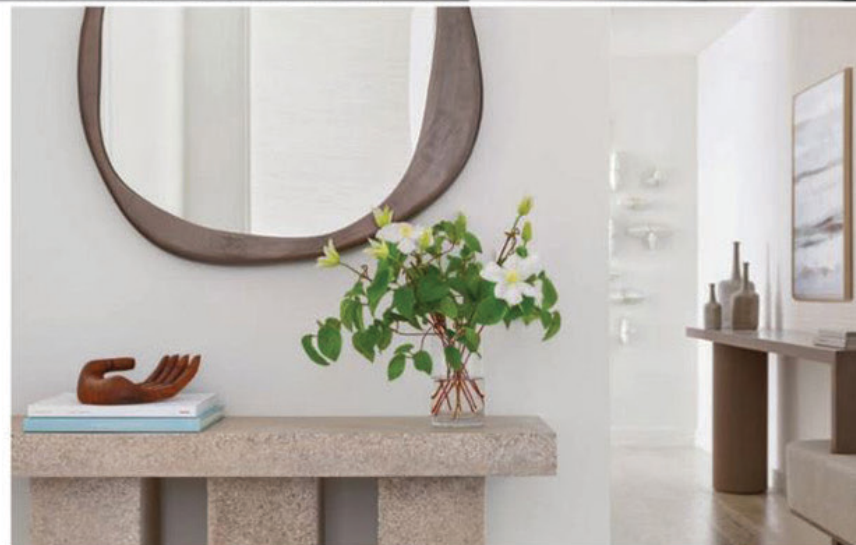
The balcony wraps two sides of the unit, and the outdoor seating area is accessible from sliders in the primary bedroom and the kitchen.

Below: In the entry, a mirror with a freeform metal frame hangs over a resin, stone, and fiberglass console by Zachary A.

What to do when your clients eschew color, pattern, and contrast? “We focus on playing with textures and tones,” says Deana Della Cioppa, senior designer at Workshop/APD. The owners of this three-bedroom condo in Asbury Park, New Jersey, are a hip couple in their seventies who favor minimalistic design. Since it’s a weekend beach home, they asked for a clean feel and a bright, monochromatic palette. “They were very ‘less is more,’ which was challenging because we typically like to layer,” Della Cioppa says.

Della Cioppa and Matt Berman, a founding principal of the architecture and design firm, started with shades of milky whites, beige, cream, and taupe. Then they brought in elements of warm, whitewashed oak followed by pops of black metal that tie to the architecture.

Curating the just-right tones was tricky given the expanse of floor-to-ceiling windows that wrap the unit. “The colors reflected from the sky and the water drastically influence the tones,” Berman says. He and Della



Cioppa both note that although their office gets plenty of sunlight, the condo is bombarded to such an extreme that the colors looked completely different in the two spaces. “In the condo, all the colors looked

pink,” Della Cioppa says. “There was a lot of trial and error.”

The designers play off the understated approach to the luxury high-rise with a restrained lead-up to the ocean wow. “You



## GENERATION 4

Folding Glass Walls by NanaWall

Drawing from four decades of innovation, NanaWall once again creates the most advanced family of folding glass walls.

[nanawall.com/generation4](https://nanawall.com/generation4)

**Clean Aesthetics:** The slimmest profiles available and minimal exposed hardware.

**Flexible Stacking:** Unique floating panel sets can stack either to the left or right.

**Barefoot Friendly:** Sill design offers weather resistance while maintaining a low-profile indoor-outdoor transition.

**Easy Operation:** Smoothest and easiest operation of any folding glass wall.

**Secure & Durable:** Air, water, and forced entry tested. Entry doors tested to 500,000 and folding panels to 20,000 open and close cycles.

Available in  
three different  
material choices:



ALUMINUM



WOOD



CLAD

Visit [NanaWall.com](https://NanaWall.com)  
800 873 5673  
[inquiries@nanawall.com](mailto:inquiries@nanawall.com)

**NanaWall®**  
Boundaries **Unbound®**





APR  
+  
MAY  
2022

16

enter the building on a side street with an urban feel, step onto the elevator, and travel down a long, windowless corridor," Berman says. "As you walk into the unit, you're drawn down the gallery towards the natural light." A woven wallcovering with a nubby stripe adds dimension to a long wall. Then, the big release. "You step around the corner into an amazing fishbowl surrounded by water," Berman says.

The team left the sleek kitchen intact, ensuring that the finishes coordinate with the design of the open living space. White stools enliven the island with a horizontal rhythm, while a black slash-and-scribble of a chandelier anchors the extension table in the dining area. "They wanted a small-scale square table for playing cards that also worked for entertaining," Della Cioppa says. Curved chairs with a low profile maintain the view and circulation path.

A bi-level wool rug grounds the seating area dotted with white furnishings in curved forms, including a sectional sofa upholstered in bouclé performance fabric and two smooth, pebble-shaped coffee tables. "We went through many rounds to get the rug right," Della Cioppa says, noting that the



Clockwise from left, The design team worked closely with rug company Tai Ping to find just the right color and pattern for the custom, bi-level rug in the living room.

An Artemide chandelier hangs over a Mark Jupiter extension table. The black steel light refers to the balcony rail," designer Deana Della Cioppa says.

The designers used frosted white acrylic to back some of the boxes in the shelving unit.

POLHEMUS SAVERY DASILVA

## Built on Tradition. Designed to Endure.

More than 25 years and hundreds of successful projects later, we remain committed to design that is lasting and noteworthy, and craft that sustains, inspires and works in harmony with this beautiful natural environment.

Learn more at [psdab.com](https://psdab.com)



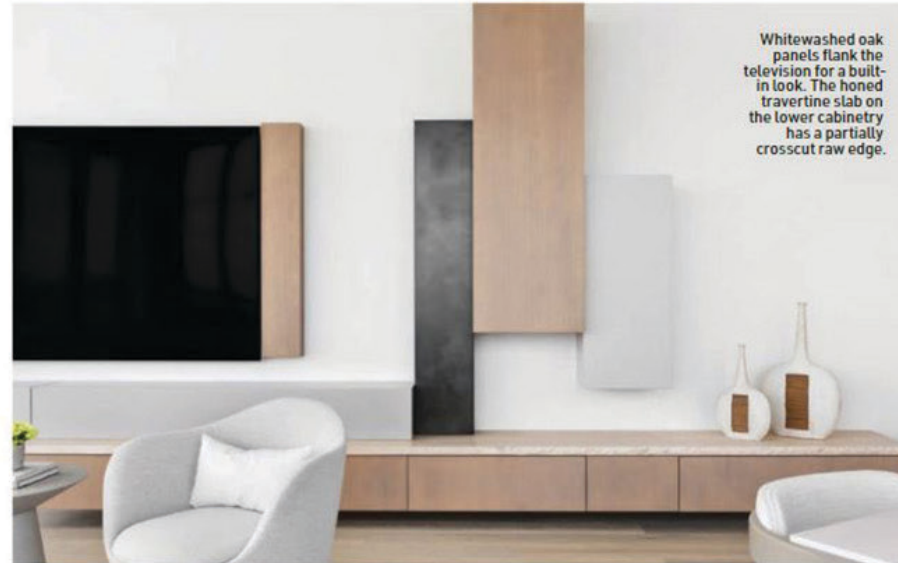
# design

■ INTERIOR DESIGN

original version, a two-tone, jute and wool design, had too much contrast. "This is all one color in a cut-pile wool with an incised grain detail of wool loops," she says.

An asymmetrical configuration of bespoke cabinetry surrounds the television like an art installation. The tableau is based on an inspiration image of a floating credenza from the wife. "It was super contemporary and very glossy," Della Cioppa says of the Italian-designed piece in the picture. "We adapted the concept by making it softer and warmer, and giving it some texture." The result is an eye-pleasing arrangement of whitewashed oak, matte gray lacquer, and blackened pewter-wrapped boxes that serve as storage and decoration.

The team came up with a stylish storage solution for the husband's office too: a desk with a shelving unit that doesn't block the view. "Figuring out the placement of the blocks was like playing Tetris," Della Cioppa jokes. The see-through piece is fabricated from white Corian, a sturdier material than wood when cut so thinly. A simple chaise sits against the subtly cross-hatched wallcovering on a stria rug with bits of white thread. "He didn't want too much of anything in here, so we just used a deep chaise and a small metal table he can pull up to it," Della Cioppa says.



Whitewashed oak panels flank the television for a built-in look. The honed travertine slab on the lower cabinetry has a partially crosscut raw edge.



Pfeifer Studio tables made from rough-cut solid pine logs add a natural touch to sitting area of the primary suite.



Mushroom lamps sit atop spare Skram nightstands in the primary bedroom where sheer draperies match those used throughout the unit. Grooves in the Warp & Weft rug echo the lines of upholstery on the rounded bench.

A long hallway on the other side of the entryway leads to the primary suite, a serene room, done in the same white, cream, and taupe tones as the rest of the condo, but a touch more layered. Velvety rugs feel luxe underfoot, and an upholstered headboard with vertical channels is a comfortable backrest for reading in bed. A chaise tucks perfectly into a corner across the room, where a TV on a barely there stand can also easily face the bed.

As the designers' first project to be completed during the pandemic, it presented some predicaments. Early on, Della Cioppa traveled to a warehouse in another city to retrieve parts for the living room light fixture. "We navigated uncharted territory and completed an authentic design in a creative community for this very in-love couple," Berman says. +

FOR MORE INFORMATION, VISIT [workshopapd.com](http://workshopapd.com)

Great Homes Happen By Design®



**Stillwater**  
dwellings®

**Don't Wait To Find A Dream, Build It** - From the remote coasts of the Puget Sound to the beautiful views of Southern California. We specialize in creating high-end, modern homes across the Pacific Coast and beyond. With our system-built method we provide you with true predictability and a sustainable build. From our free, up-front site evaluations to move-in-day, our team is there to guide you through the entire process.

**Contact Us Today To Learn How We Can Help You Build Your Dream Home**  
800.691.7302 | [info@stillwaterdwellings.com](mailto:info@stillwaterdwellings.com) | [www.stillwaterdwellings.com](http://www.stillwaterdwellings.com)