



WORKSHOP/APD

ABOUT WORKSHOP/APD

At Workshop/APD, an award-winning New York City-based multidisciplinary design and architecture firm, each project is uniquely defined by a sense of place and purpose and a desire to ultimately enhance the user's experience through exceptional design. From sleek penthouses and seaside retreats to luxury residential developments and groundbreaking hotels and restaurants, the firm's aesthetic is timelessly modern but site-specific, unbound by project type or a singular style. Led by founding principals Andrew Kotchen and Matt Berman and principal Thomas Zoli, a collaborative team of more than 50 architects, interior designers and product designers leverages its vast and highly varied experiences to solve complex design challenges, resulting in spaces that are exceptionally beautiful and accessible.

Through a unique, vertically-integrated service offering that spans all aspects of architecture, interior design and product design, Workshop/APD can own every step of the design and build process from inception to completion. The firm is known for embracing technology and celebrating craft, actively pursuing materials with a worked hand and creating one-of-a-kind furnishings and finishes to bring texture, materiality and contrast to luxurious modern spaces. Committed to designing places that celebrate a project's location and history, the team demonstrates a profound respect for the physical and contextual environment in which projects are realized, extending the experience beyond the structure to merge landscape, neighborhood, architecture and furnishings in a beautiful, synergistic unit.

THE WORKSHOP LENS

HUMAN CONNECTIONS



Design and architecture have the ability to shape our experiences, fostering meaningful interaction and creating lasting memories.

LUXURY EXPERIENCES



Experience is the ultimate luxury, and it is our responsibility as designers to craft beautiful experiences that stay with you.

PLACE-BASED DESIGN



Our study of the contextual environment extends to culture and community, driving work in harmony with the local landscape.

LIFESTYLE



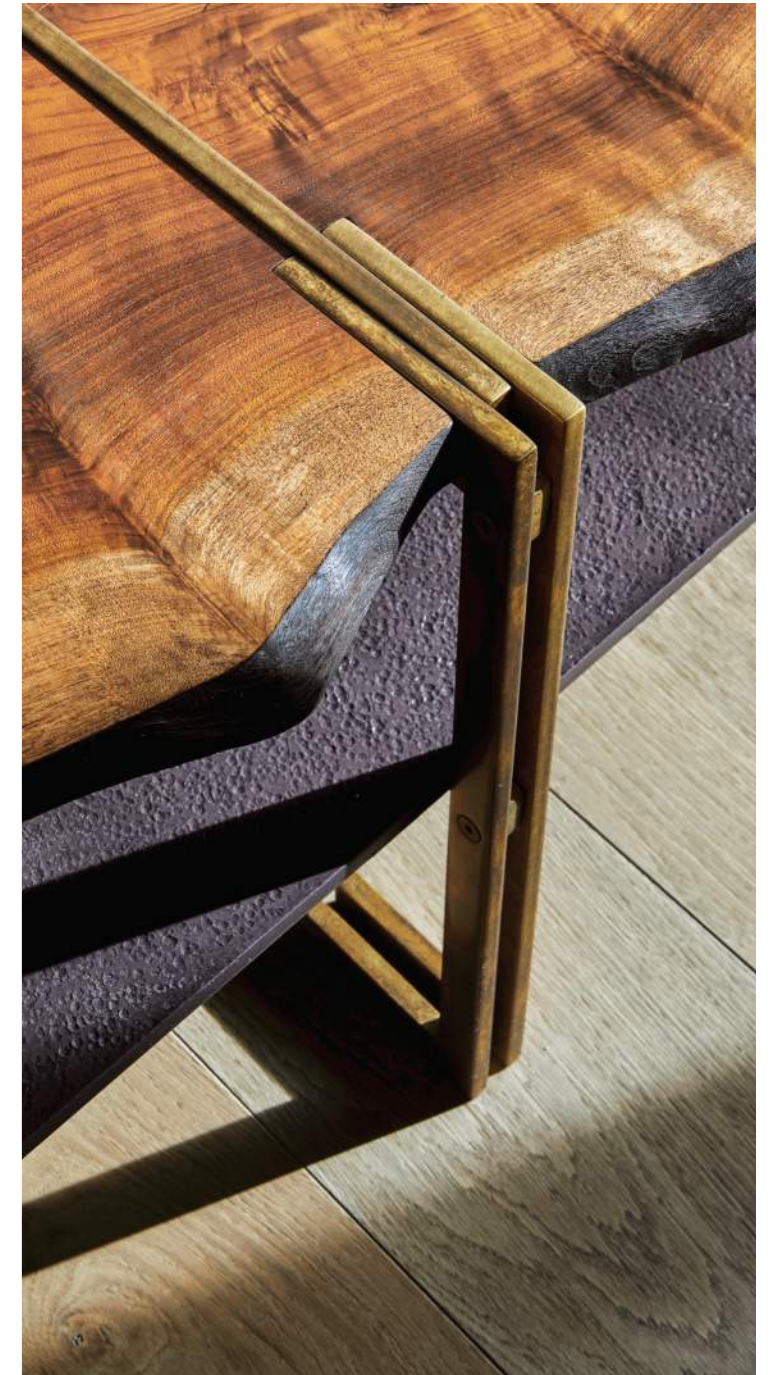
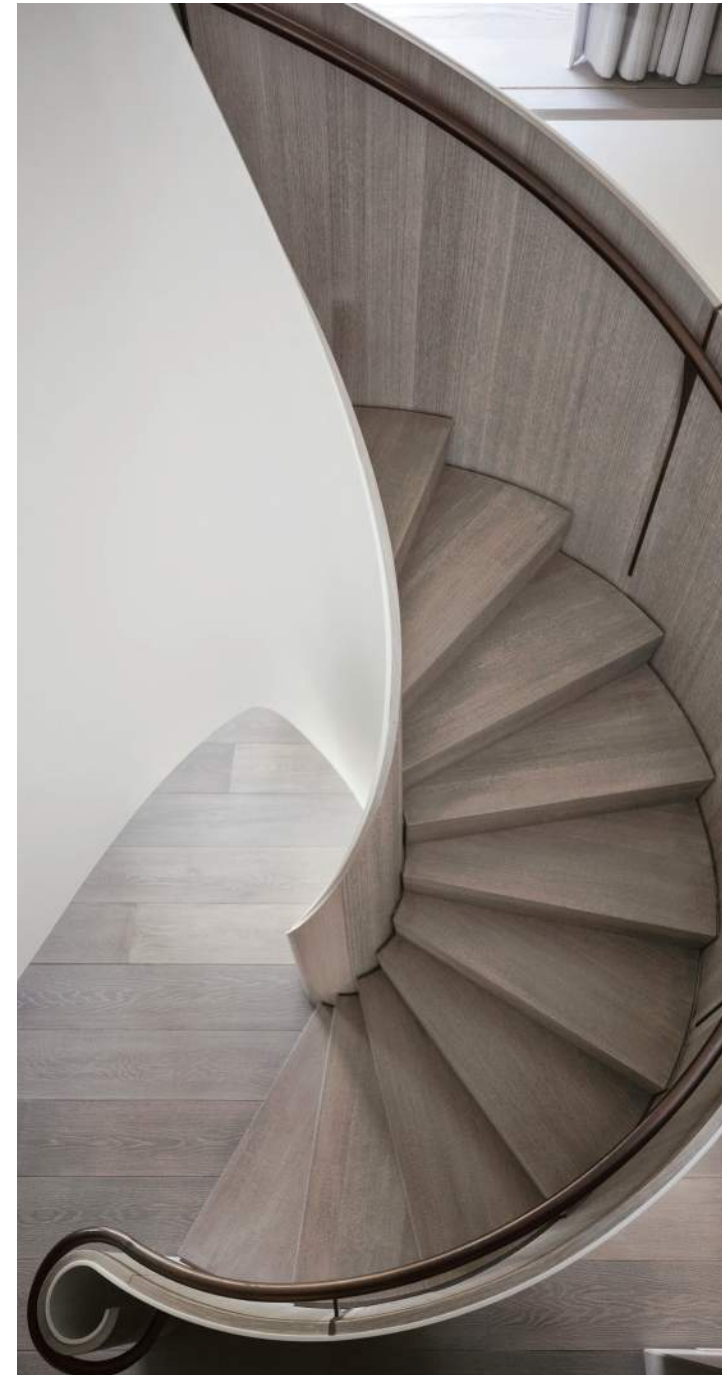
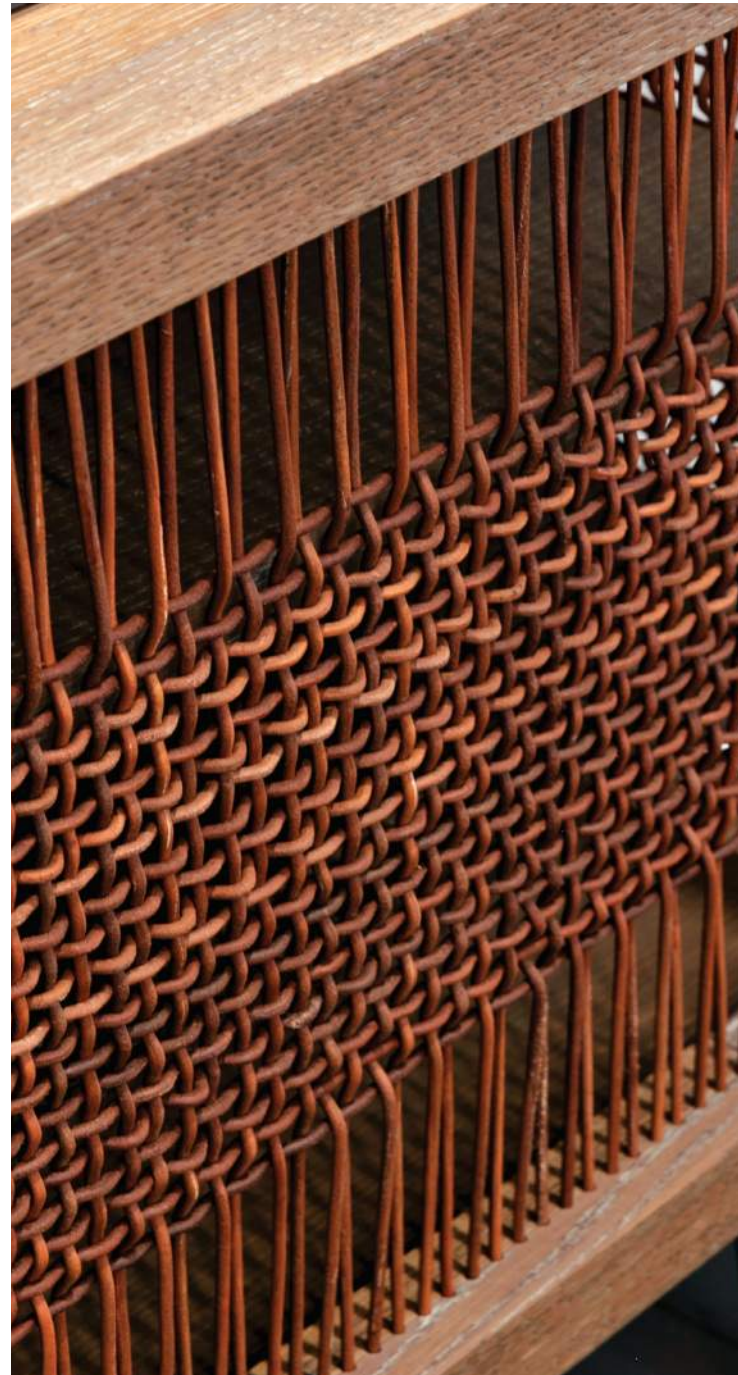
From seamlessly integrated technology to thoughtfully displayed family heirlooms, our designs do not limit life, they enhance it.

CRAFTED MODERN

"Modern" underscores an approach that is innovative and forward-thinking, not nostalgic. "Craft" is not limited to the handmade, but rather is an open-minded exploration of the ways that simple materials and connections can be elevated by transformation and continue to evolve over time. Finished, refined, textured, honed, engineered, joined and detailed: in revealing the hand of the maker we breathe life into the materials of our trade.

Subtle variations make each project and space unique, whether the work is done by hand, by machine, or by time and weather. There is beauty in these so-called "imperfections", which imbue a decorative, tactile quality and invite investigation and touch, activating a meaningful relationship between a space and its inhabitants.

**This is what gives
modern design a soul.**



VERTICALLY INTEGRATED DESIGN

ARCHITECTURE



Through program, massing and form studies we find and build upon a site's best attributes, framing a project narrative. This foundational concept informs all future design decisions.

INTERIOR ARCHITECTURE



We understand how scale relates to interior architecture, exploring how people will interact in each space and how the interiors, fixtures and finishes will take form from this narrative.

INTERIOR DESIGN



We think of each furnishing, fitting, fabric and finish as an extension of its surroundings, meant to create interesting tension or seamlessly align within a room's four walls.

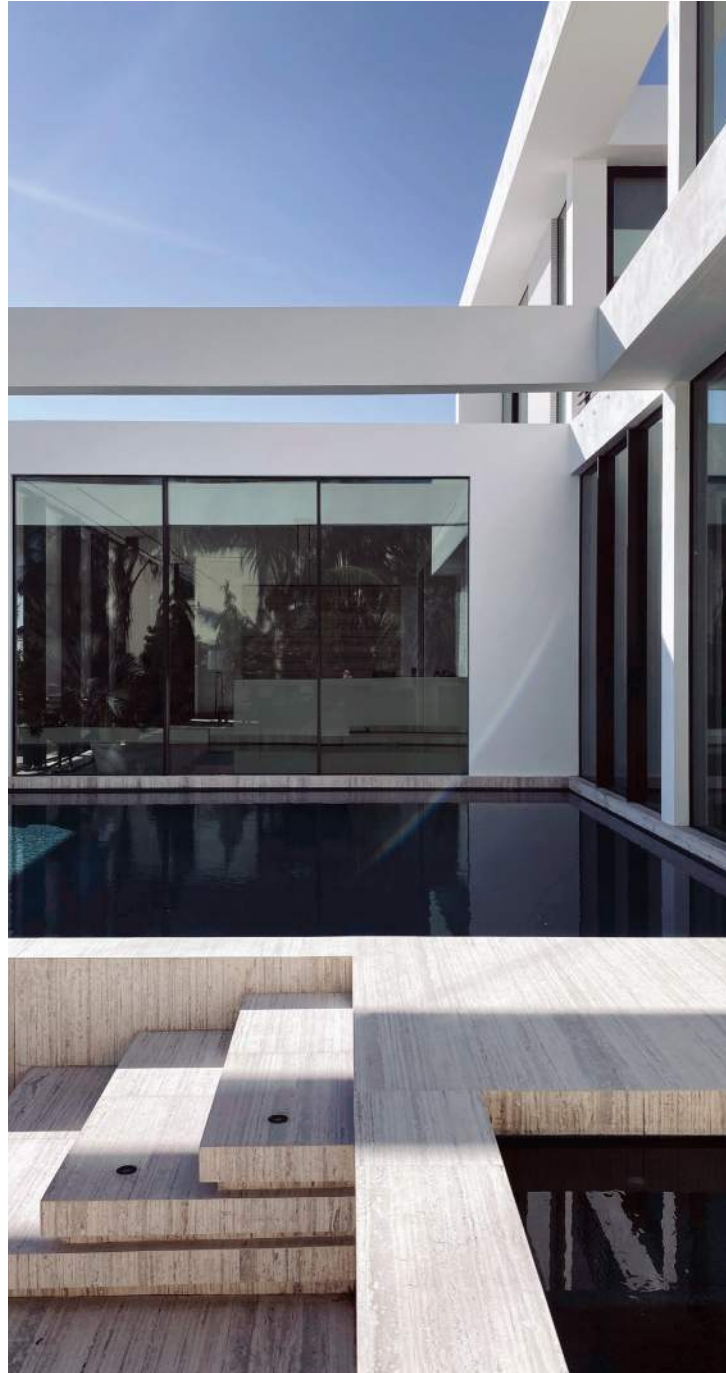
PRODUCT DESIGN



We are obsessed with craft and construction, immersing ourselves in each detail's endless options, studying the trade and its techniques, and exploring the tactile quality of soft goods.

MULTIDISCIPLINARY DESIGN

RESIDENTIAL



We don't just design for clients, we collaborate with them. We imbue our work with a precise understanding of how people live and use their spaces on a daily basis.

DEVELOPMENT



Workshop/APD leverages years of success in the single-family home market, translating that same client experience of craft, context and luxury to the multi-family world.

HOSPITALITY



We craft spaces that foster the type of behavior our clients want to experience, placing a premium on relaxation, adventure, and connection through communal gathering.

PRODUCT



In our custom product offering, we extend our design influence beyond a space's architecture and interiors, transforming individual design elements to create a crafted experience.

OUR PRACTICE

HOMES

- SINGLE FAMILY
- APARTMENTS
- TOWNHOUSES
- LOFTS
- PENTHOUSES
- DUPLEXES
- LUXURY RESIDENCES
- RESORT HOMES
- VACATION HOMES

DEVELOPMENT

- MULTI-FAMILY
- APARTMENT BUILDINGS
- CONDOS
- MULTI-USE
- COMMERCIAL
- CIVIC
- INSTITUTIONAL
- CO-LIVING

HOSPITALITY

- RESTAURANTS
- HOTELS
- BARS
- LOUNGES
- SOCIAL CLUBS
- GYMS
- SPAS

PRODUCT DESIGN

- FURNITURE
- PLUMBING FIXTURES
- HARDWARE
- LIGHTING
- RUGS
- OUTDOOR FURNITURE

RESIDENTIAL: APARTMENTS

JEAN NOUVEL PENTHOUSE



MUSEUM MILE DUPLEX



CENTRAL PARK WEST

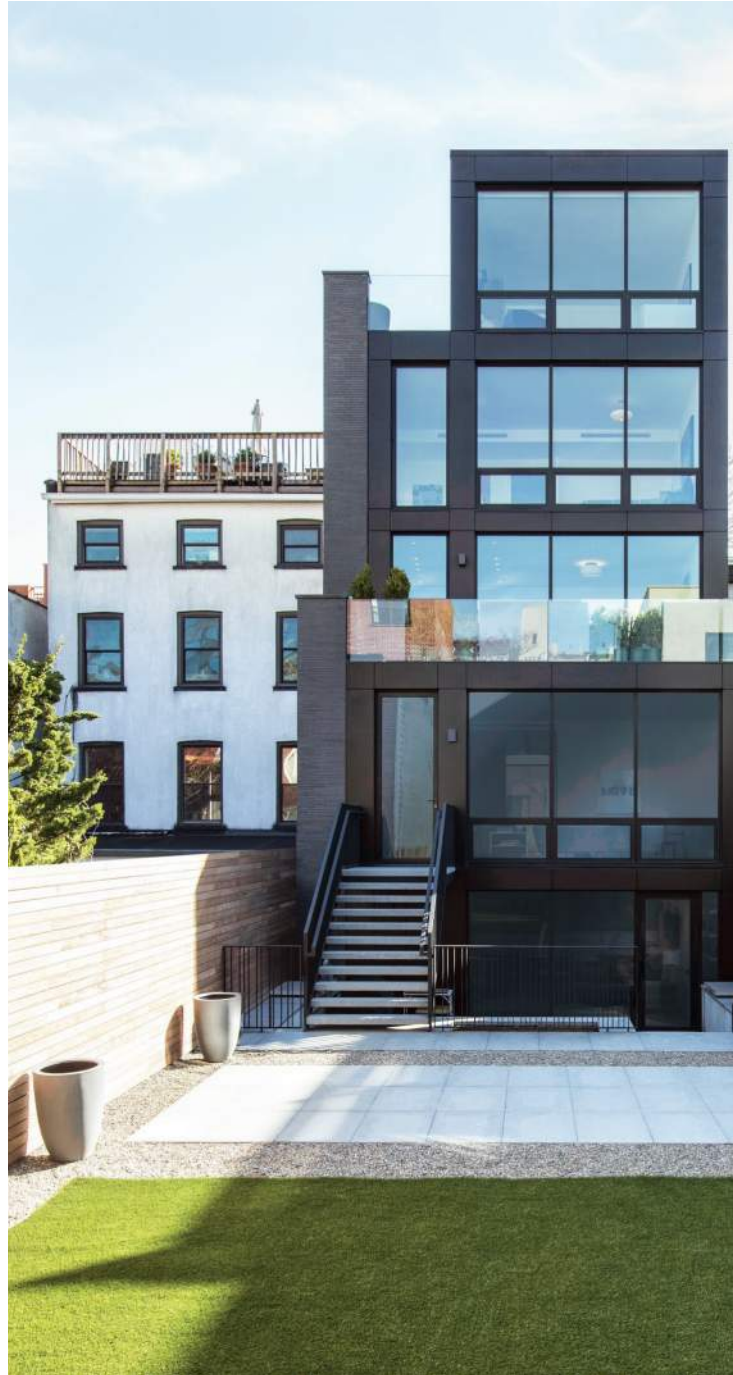


PERRY STREET TOWERS



RESIDENTIAL: TOWNHOMES

BROOKLYN GROUND-UP



THE PRINTING HOUSE



UPPER WEST SIDE FACADE



PARK SLOPE TOWNHOUSE



RESIDENTIAL: SINGLE FAMILY

NANTUCKET RETREAT



HAMPTONS HOME



LAKEHOUSE MODERN



HUDSON VIEWS



DEVELOPMENT

WEST VILLAGE GROUND-UP



111 Leroy Street
Architect Of Record & Interior Designer

SOHO GROUND-UP



70 Charlton
Interior Architecture & Design

NOMAD OFFICE CONVERSION



88 & 90 Lexington
Architect Of Record & Interior Designer

PRINTING HOUSE



The Printing House
Interior Architecture & Interior Design

HOSPITALITY

HOTEL JULIEN, CHICAGO



Restaurant & Public Space

ARLO HOTEL, NYC



Massoni Restaurant

BEACH RESORT, KAUAI, HAWAII



Public Spaces & Guest Rooms*

1 HOTEL, NASHVILLE



Public Spaces & Guest Rooms*

*IN DEVELOPMENT

PRODUCT: BESPOKE FURNISHINGS

CURVED DESK



OCCASIONAL TABLE



MASTER BEDROOM BED



LIVING ROOM SHELVEING



PRODUCT: LICENSING & PRIVATE LABEL

DESIRON: FURNITURE



Bench, Bar Cart and Hooks from the Workshop/APD x DESIRON Collection.

SA BAXTER: HARDWARE



Select peices from The Looking Glass Collection.

WARP & WEFT: RUGS



Tidal B from the Atlantic Collection

PRIVATE LABEL FAUCETS



Wonder Loft Development facuets by Waterworks.

OUR PUBLIC CLIENTS



OUR PAST & CURRENT LOCATIONS

ASBURY PARK, NJ · ASPEN, CO · BAL HARBOUR, FL · BANFF, CANADA · BOSTON, MA · BROOKLYN, NY · CHICAGO, IL · CRESTED BUTTE, CO · DENVER, CO · FORT LAUDERDALE, FL · GREENWICH, CT · KAUAI, HAWAII · LONDON, ENGLAND · MIAMI, FL · NANTUCKET, MA · NEW CANAAN, CT · NEW PROVIDENCE, BAHAMAS · NEW YORK, NY · OAKLAND, CA · PARIS, FRANCE · PHOENIX, AZ · PITTSBURGH, PA · SALT LAKE CITY, UT · THE HAMPTONS, NY · VALLETTA, MALTA

THE LEADERSHIP



ANDREW KOTCHEN
FOUNDING PRINCIPAL

For two decades, Andrew Kotchen's distinct aesthetic vision and leadership has shaped a remarkable portfolio of projects across North America and abroad, expanding the 50-person firm to a vertically integrated practice renowned for luxury residences; groundbreaking multi-family developments and design products developed in partnership with leading manufacturers.



MATT BERMAN
FOUNDING PRINCIPAL

Matt Berman believes passionately in the transformative power of good design, and the built environment's ability to catalyze meaningful interactions and experiences. He leads the firm's growing hospitality practice, designing modern hotels and restaurants, as well as luxury homes, residential developments and institutional projects that invite inquiry at every scale.



THOMAS J. ZOLI, AIA, NCARB
PRINCIPAL, DIRECTOR OF ARCHITECTURE

Thomas is known for designs that are as functional as they are memorable, resonating beyond transient notions of beauty. He applies considerable experience and institutional knowledge to develop strategic solutions for commissions of every type and scale, and his design work and project management reflect an incisiveness and practicality that is critical to large-scale infrastructure work.



ANDREW KLINE,
DESIGN DIRECTOR,
SENIOR ASSOCIATE



STEPHAN THIMME,
MANAGING DIRECTOR,
SENIOR ASSOCIATE



BROOK QUACH,
DESIGN DIRECTOR,
ASSOCIATE



MICHAEL ELLISON,
DESIGN DIRECTOR,
RESIDENTIAL INTERIORS,
ASSOCIATE



J. TYLER MARSHALL,
MANAGING DIRECTOR,
ASSOCIATE



TYLER CHAVERS,
INTERIORS PROJECT MANAGER



ZACHARY HELMERS
SENIOR PROJECT MANAGER
ASSOCIATE



RUOXI WANG,
PRODUCT DESIGNER



JONAH KAPLAN, DIRECTOR OF
BUSINESS DEVELOPMENT



LISA JASPER,
DIRECTOR OF MARKETING + PR

PRESS

PUBLICATIONS

Elle Decoration Germany 03.01.20
Modern Luxury Boston Interiors 08.01.19
Metropolis 09.01.19
Digs 08.25.19
Hospitality Design 08.01.19
New York Times 06.29.19
Interior Design Homes 06.01.19
Florida Design 06.01.19
Custom Builder Mag 05.01.19
Case Design Stili 05.01.19
Ocean Home 11.01.18
Hospitality Design 10.01.18
Digs 10.01. 18
Interior Desing 09.01.18
Artravel 08.01.18
Denizen 07.01.18
N Magazine 06.01.18
GoodSpeed 06.01.18
Bridge for Design 06.01.18
Modern Luxury Interiors Boston 04.01.18
ID Boston 05.01.18

Inside Out 4.01.18
Frame 1.01.18
Dwell 11.01.17
Metropolitan Home 11.01.17
Elle Decor 11.01.17
Interiors Magazine 10.01.17
Exuberance 10.01.17
Interior Design 09.01.17
Interior Design Homes 09.01.17
Ocean Home 08.01.17
Hospitality Design 08.01.17
Only Magazine 07.01.17
N Magazine 07.01.17
Luxe Magazine 06.01.17
Business of Home 06.01.17
Home Art Magazine 06.01.17
New York Spaces 04.01.17
Aspen Magazine 01.02.17
Attitude 12.01.16
Westchester Magazine 10.01.16
Marie Claire Maison 10.01.16



HONORS & AWARDS

NYCxDesign 2019
Hardware: Designer Collaboration

Architizer A+ Awards 2019
Finishes-Carpet, Openings-Doors & Door Hardware

Interior Design Power Grid
2018,2019

Ocean Home's Top 50 Coastal Architects
2015, 2018, 2019

New York Spaces Top 50 Designers
2008-2017

Westchester Home's 2015 Design Awards
Best Whole Home
Briarcliff, NY 2015

Best of Year Awards
Honoree in Institutional Category
New York, NY 2012

Building Brooklyn Awards
The Brooklyn Chamber of Commerce
Brooklyn, NY 2012

Interior Design Best of Year Awards
Merit in Kitchen and Bath
New York, NY 2010

Departures Magazine
Up and Coming Designers of the Year
New York, NY 2010



EXHIBITIONS & SPEAKING ENGAGEMENTS

What's New What's Next 2017, 2018, 2019
Workshop/APD by DESIRON, SA Baxter Looking Glass by Las Vegas, NV 05.04.2016
Workshop/APD, Workshop/APD x Arteriors

Speaker (MDB), "HD Expo, Driving Force: Hospitality's Far Reaching Influence"
Las Vegas, NV 05.10.2019

Speaker (MDB), "Architectural Digest Design Show : Home Suite Home"
New York, NY 03.17.17

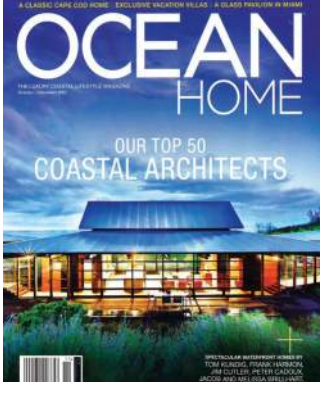
Speaker (ADK), "Corcoran - Corcoran Sunshine Talks: The Changing Landscape of the West Village"
New York, NY 11.14.16

Speaker (MDB), "Hospitality Design Expo"
Las Vegas, NV 05.04.2016

Speaker (TJZ), "Create + Construct 2015: THE Crafted Condo Conversion - Challenges & Solutions"
New York, NY 09.15.2015

Speaker (MDB) , "Corcoran - Corcoran Sunshine Talks: Spatial Possibilities"
New York, NY 10.14.2015

Lecture at Lehigh University School of Architecture,
Lehigh, PA, 01.15.2014



WORKSHOP/APD

39 West 38th Street, 7th Floor New York, New York 10018
212.273.9712